

Owner's Operation Manual

IO-600U

DIGITAL CONTROL FAUCET



Warning

Incorrect installation and /or operation could void your valuable warranty. Please protect your investment!

READ THIS MANUAL CAREFULLY

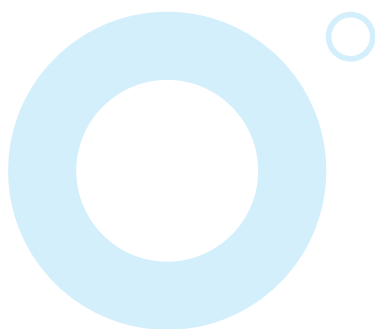


Table of contents

Safety Precautions	03/04
Name and functions of parts	05/06
Accessories(Needed for faucet installation)	06
How to install the faucet	07/10
How to use	11/15

Safety Precautions

Read the recommendations below before installing the ionizer
DO NOT MAKE A REPAIR YOURSELF! Attempting to do so will VOID your warranty!
Contact service center if the machine breaks down.



NEVER touch the power cord or plug with wet hands
– This may result in electric SHOCK!
Ensure the power plug is firmly and properly inserted into the outlet
– This may result in electric SHOCK or FIRE!



Protect your machine from freezing temperatures and direct sunlight.



DO NOT USE your machine at voltages other than specified.
DO NOT PLUG in your machine where it will exceed the rating of outlet or electric wiring.
Failure to do so can result in fire, injury and / or damage to yourself, or wiring or machine!



DO NOT run hot water through your machine.
DO NOT clean by pouring water over or spraying the machine.



Unplug your machine if you plan Not to use it for an extended period of time or turn off the master power switch on the back of the unit.
Filter replacement may be necessary



DO NOT attempt to repair or service the machine yourself!
Make sure to use your machine only with potable water suitable for human consumption.



If the appliance makes strange or unusual noises.
If burning smells are detected, unplug the power cord immediately and contact customer service

pH Reagent Liquid Precautions



DO NOT expose the pH measuring reagent to extreme heat, flames or fire. It is Combustible.



Neither drink the pH reagent liquid, nor put it in the eyes or apply to the body. If the liquid is ingested, induce vomiting immediately and call a doctor. If the liquid gets in the eyes, flush immediately and thoroughly with cool water; call a doctor. If spilled or dropped on your body, wash it off immediately.



Make sure to keep the pH reagent liquid tightly closed and out of the reach of children.

Some Helpful Tips



DO NOT store alkaline water in stainless steel, bronze or aluminum containers. Glass or ceramic is best for storing your alkaline water, but you can use high quality plastic container also.

Always try and keep your stored water cool and away from direct sunlight.

It is always best fresh out of the machine and ideal if consumed on a day today basis.

Save the box and Styrofoam your machine came packed in. This will help if your machine needs to be transported at a later date.

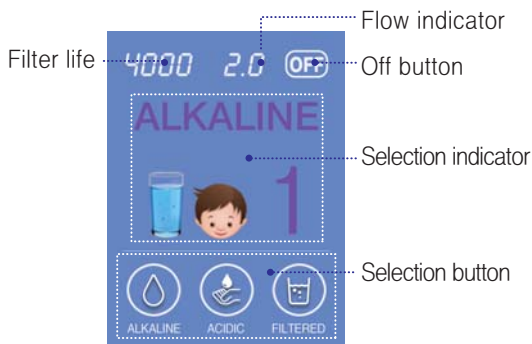
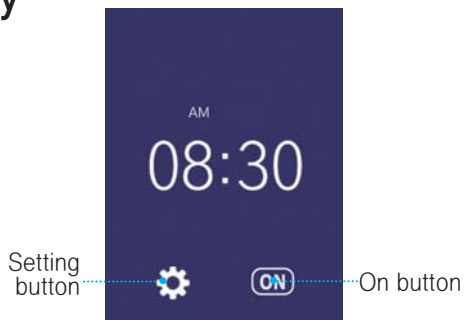
If you are using your machine downstream of a reverse osmosis system or running reverse osmosis water in your home, remineralization of the water will be needed.

Name and functions of parts

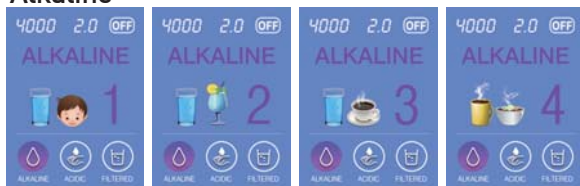
Faucet



Display



Alkaline



Acidic



Filtered



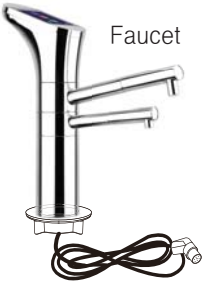
Accessories (Needed for faucet installation)

CAUTION

Product Requirement :

Water pressure should be maintained at a constant rate, when the water pressure is too low, water cannot flow through the unit.

■ Accessories



Large Alkaline Water Fitting



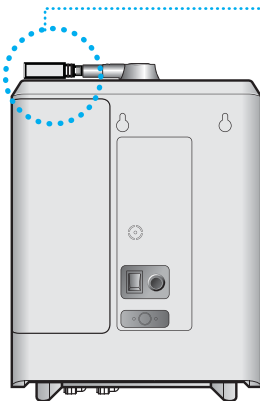
Small Acidic Water Fitting



Alkaline Water Outlet Adapter



Allen wrench



Alkaline Water Outlet Adapter
(Hole size: 5/16")

Please connect to top cap of ionizer for installation Faucet.

How to install the faucet

To connect the faucet

All the fittings are push in style fittings. To attach the hoses to any fitting, firmly insert the end of the hose into the fitting. Pull firmly to check to connection – you should not be able to pull the hose out. To release the hose from the fitting, you must push the spring loaded ring protruding from the end of the fitting while pulling the hose out.

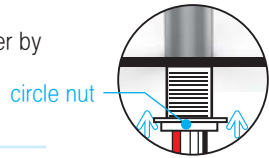
WARNING

Incorrect installation could void your valuable warranty. Professional installation is recommended.

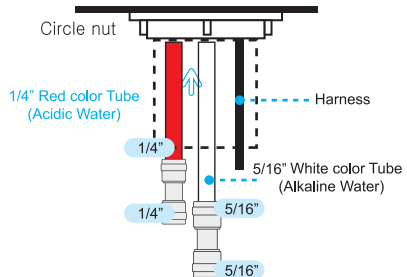
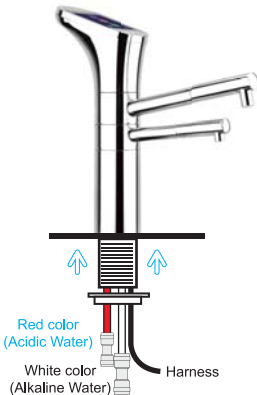
- 1 Use appropriate tools to make 1.14in. diameter hole in the location where you will setup the faucet. Make sure the faucet location will allow both spouts to reach the sink. Center the faucet in the hole properly over the gasket.

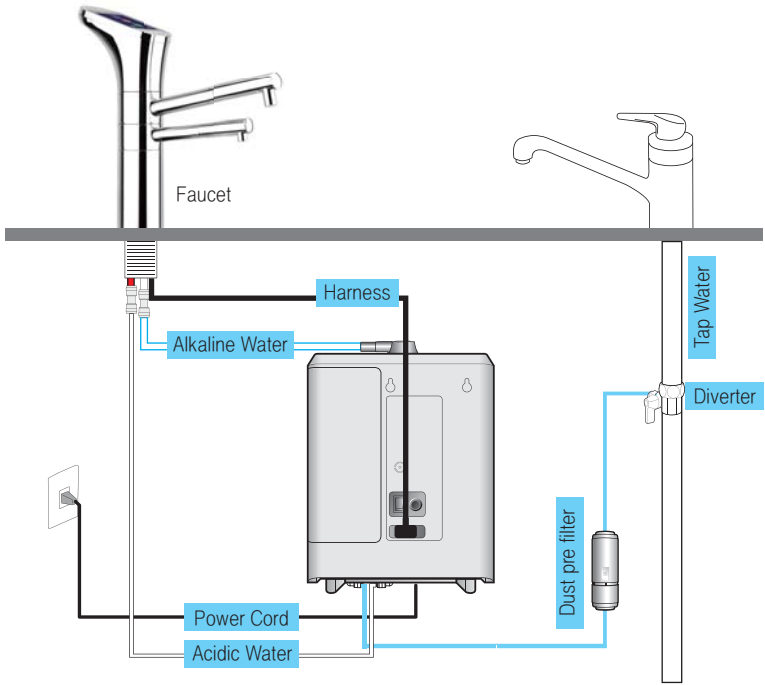


- 2 Once, centered secure the faucet to the counter by tightening the circle nut under counter until the faucet is secure and sufficiently tight.



- 3 After the faucet is fixed, connect it to fitting with 5/16 in hose (for Alkaline) like Check the hose whether it is inserted properly or not. Also, connect it with 1/4" hose (for Acidic) like figure 4 and connect the faucet to the body with connector cord.



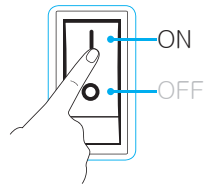


- 4 Place the ionizer in an appropriate place under your sink.
- 5 Connect the 1/4inch acidic water hose to the small fitting on the acidic hose extending from the faucet to acidic water outlet on the ionizer. Pull firmly to check to connection. You should not be able to pull the hose out.
- 6 Connect 5/16 inch alkaline water hose attached to the fitting of the faucet to the alkaline water outlet on the ionizer. Pull firmly to check to connection –You should not be able to pull the hose out.
- 7 Connect the diverter between the tap water pipe.
- 8 Install the dust pre-filter in the middle of 1/4 inch hose with the arrow pointed at the ionizer. Connect the 1/4 inch hose with dust pre-filter to tap water inlet on the bottom of the ionizer. Pull firmly to check to connection you should not be able to pull the hose out.

- 9 Join the wire from the faucet to the Connect Wire(Harness). Plug the Connector Cord into the Connector Port on the top of the ionizer.
- 10 Connect the power cord into an appropriate outlet.
- 11 Make sure the outlet you plug your ionizer into is always live. You must use a nonswitched outlet under the sink where you are installing the ionizer. Power to the ionizer must always be on.

Initial operation

- 1 Turn the power button to the "ON" position on the back of the ionizer.
 - The power button is ALWAYS left on.
- 2 Water supply
 - Supply water by opening the water supply valve.
- 3 Start water flow through your ionizer.
 - Press the button on the top of your faucet to start the water flow.



NOTE

- The water may initially come out discolored (light to charcoal gray) due to carbon particulates in the new filter.
- This is not harmful and is typical of all carbon filters. Allow the water to flow for 2-3 minutes in the "Filtered" mode and this will flush all the carbon dust.

How to use

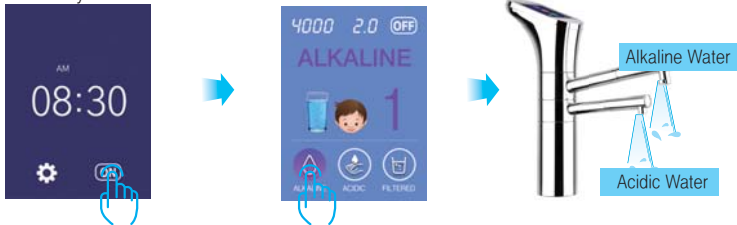
To select Alkaline water

- 1 With the water running through your faucet then:
- 2 Press the **"ALKALINE"** button to select the desired setting from 1 – 4.
The alkaline water will come out from the top spout.
- 3 To select a different level, depress the **"ALKALINE"** button to move to next level until the desired setting level is achieved.
The number will change accordingly.

NOTE ↓

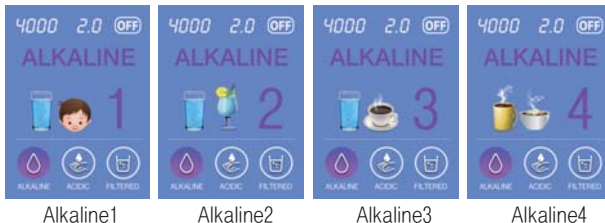
Your ionizer will always "remember" the last setting used.
If the previous selection was Alkaline Level 1, when you start flow through the ionizer next time you use the ionizer it will automatically process at Alkaline Level 1.

Standby mode



Alkaline water levels

pH levels will always vary with different source water.



To select Acidic water

NOTE Acidic water is used except for drinking. **DO NOT DRINK**

- 1 With the water running through your faucet then:
- 2 Press the **"ACIDIC"** button to select the desired setting from 1 – 4.
The acidic water will come out from the top spout.
- 3 To select a different level, depress the **"ACIDIC"** button to move to next level until the desired setting level is achieved.
The orange number will change accordingly.

NOTE

In order to prevent misuse of acidic water, your ionizer will always begin with Alkaline Mode in standby mode.



Acidic water levels

pH levels will always vary with different source water.

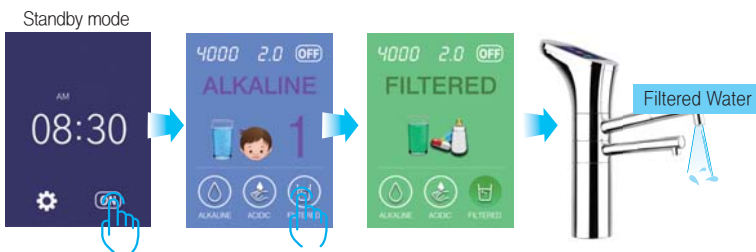


To select Filtered Only water

With the water running through your faucet, press the **"FILTERED"** Only button. The display panel will show a green symbol. The Filtered water will come out of the top spout.

NOTE

Your ionizer will always start with Alkaline Mode in standby mode.

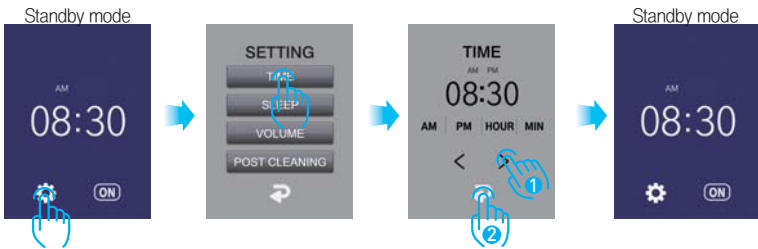


How to shut off the water flow from your ionizer

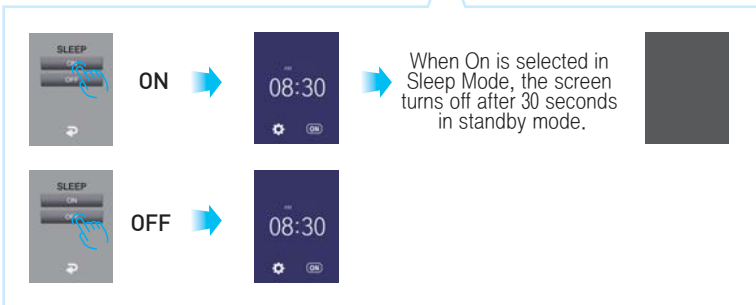
With the water running through your faucet then depress the home button.



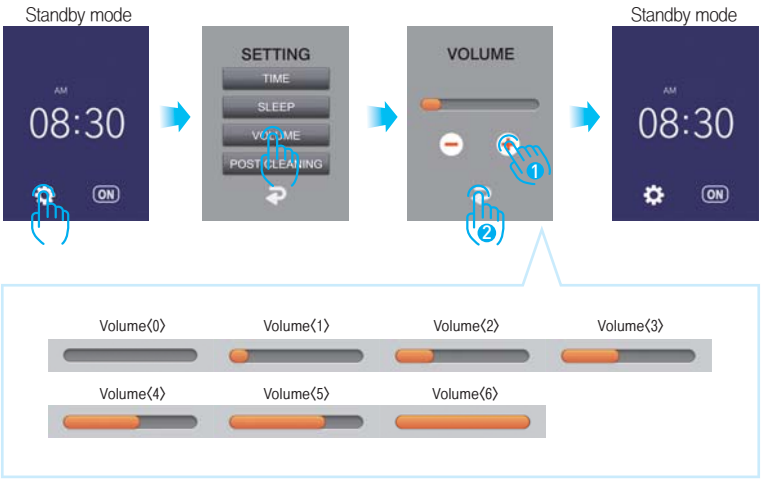
How to set your individual Time



How to set your individual Sleep

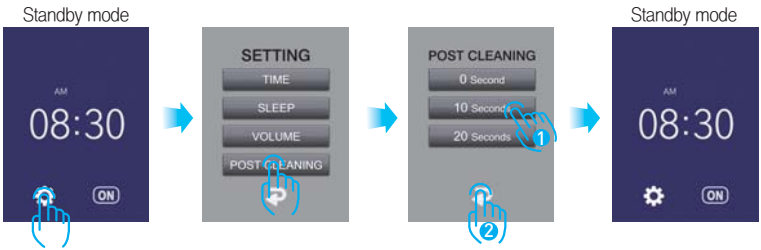


How to set your individual Volume

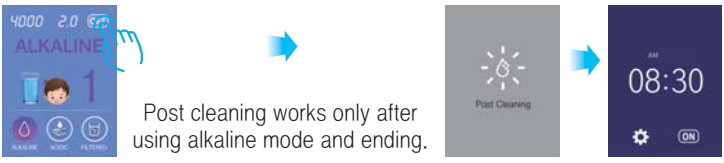


How to set your individual Post cleaning

Post Cleaning is an additional product cleaning feature.



After using the product, water is discharged for the set time. (Non for drinking)



IO-600U

DIGITAL CONTROL FAUCET